

TECHNORIYA ETECHNOLOGY PRIVATE LIMITED

CORPORATE PORTFOLIO

© 2020. TECHNORIYA ETECHNOLOGY PRIVATE LIMITED
STRICTLY PRIVATE AND CONFIDENTIAL.



OVERVIEW

TECHNORIYA ETECHNOLOGY (P) LIMITED, A PRIVATE LIMITED INCORPORATION IS ONE OF THE FASTEST GROWING ORGANIZATION IN INDIA.

TOTAL SOLUTION PROVIDER (TSP) IN SMART GRID & INDUSTRIAL IOT.

COMPANY IS HIGHLY PROCESS-DRIVEN ORGANIZATION, MASTERING THE NUANCES OF GLOBAL BUSINESS.

YOUNG AND VIBRANT TEAM OF HIGH SKILLED MANAGERS, ANALYSTS, DESIGNERS, DEVELOPERS AND QA WORKING TO DELIVER WORLD CLASS PROJECTS AND REVOLUTIONARY SOLUTIONS.

CUSTOMER DRIVEN APPROACH WITH RELIABLE, FLEXIBLE & COMPREHENSIVE BUSINESS SOLUTIONS.

ASSURED BEST IN THE INDUSTRY ROI ON EVERY PROJECTS.



LEADING FROM FRONT

HI

I AM CHIEF EXECUTIVE OFFICER (CEO) OF
TECHNORIYA ETECHNOLOGY PRIVATE LIMITED.
I AM AN EX-INDIAN AIR FORCE INDIVIDUAL
WITH VAST EXPERIENCE IN VARIOUS DOMAIN.

I AM HAVING 15 YEARS OF EXPERIENCE IN OFC
PROJECTS, MICROWAVE COMMUNICATION,
SATCOM AND VARIOUS TELECOM PROJECTS IN
GOVT. SECTOR & CORPORATE.

I WAS RESPONSIBLE FOR PLANNING &
OPTIMIZATION OF THE TECHNOLOGIES, WHERE
PLAYED A MAJOR ROLE IN BUILDING &
MAINTAINING EXCELLENT PERFORMANCE OF
COMPANY.

MY SKILLS INCLUDE STRONG PLANNING,
IMPLEMENTATION & OPERATIONS OF
PROJECTS.



NEERAJ KUMAR

CHIEF EXECUTIVE OFFICER

IIMM – MATERIAL MANAGEMENT

B.TECH – E&TC

EX- IAF, 15+ Yrs EXP – OFC, M
COMMUNICATION, SATCOM

MANAGEMENT

DR. SAZIYA KHAN
GLOBAL HEAD – DIGITAL MARKETING
17+ Yrs. OF EXPERIENCE IN CORPORATE & DIGITAL MARKETING

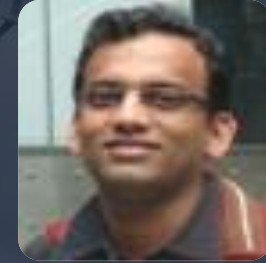


Sharat Jha
Managing Consultant
B.E.(Industrial Engineering & Management), MBA(Finance)
20+ Yrs EXP – IT, ITES, IT Enablement and Cross-functional



MANAGEMENT

Dr. Samrat Mondal
Managing IOT Consultant
10+ Yrs EXP – Ph.D. in IIT Kharagpur



Dr. Jimson Mathew
Managing Cyber Security Consultant
10+ Yrs EXP – Ph.D. in Com. Eng. From the University of Bristol



VISION

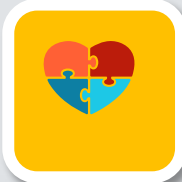
“TRANSFORM INDIA BY
ACCELERATED **SYNERGY**
BETWEEN **DIGITIZATION AND**
AUTOMATION TO MAKE IT
SMARTER”

MISSION

“ENABLE AFFORDABLE ACCESS OF
SMARTER, SECURE, FLEXIBLE AND
DIGITISED **ECOSYSTEM** IN SMART GRID,
TELECOMMUNICAION AND INDUSTRIAL
IOT”

CORE VALUES

EFFECTIVE
TEAMWORK



HIGH QUALITY
SERVICE



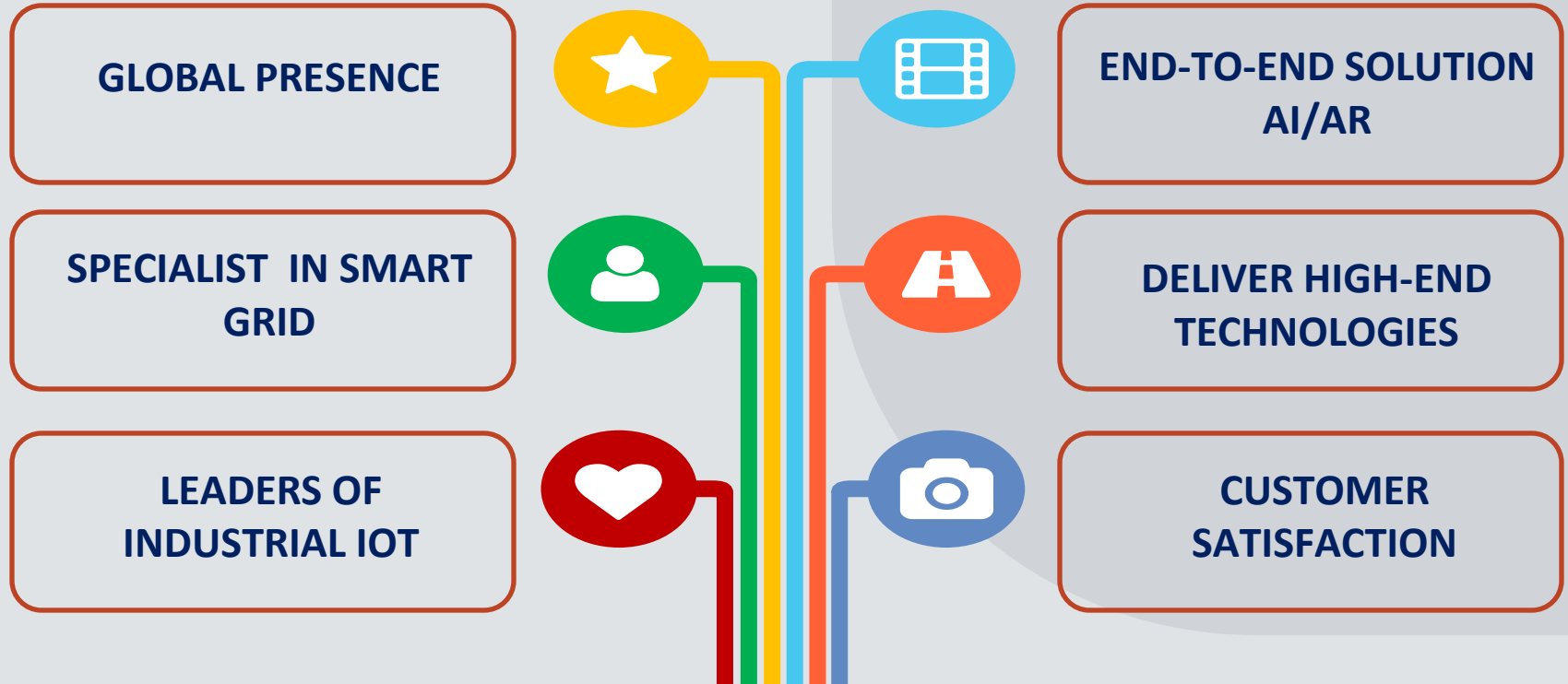
BETTER CUSTOMER
EXPERIENCE



HIGH LIFETIME
VALUE



OBJECTIVES





OUR SPECIALIZATION

AN ATTENTION TO OUR
SMART WORK HABITAT

Cyber Security training & project

Cybersecurity is the body of technologies, processes, and practices designed to protect networks, computers, and data from attack, damage, and unauthorized access. Courses in cybersecurity teach professionals to spot vulnerabilities, fend off attacks, and immediately respond to emergencies.

You've heard this message repeatedly — cyber security is everyone's responsibility. But is everyone in your organization cyber security responsible? If there are cracks in the defenses, you need to learn how to protect and defend against cyber threats with our cyber security training and certification programs.

We also provide 100% real scenarios in all the courses. With our real time trainer's expertise and tailor-made training curriculum you can meet your career objectives whether you are a student, fresher or a working professional.

With such a broad client base, Technoriya Solution guarantees that talented and experienced candidates will be exposed to meaningful career opportunities.



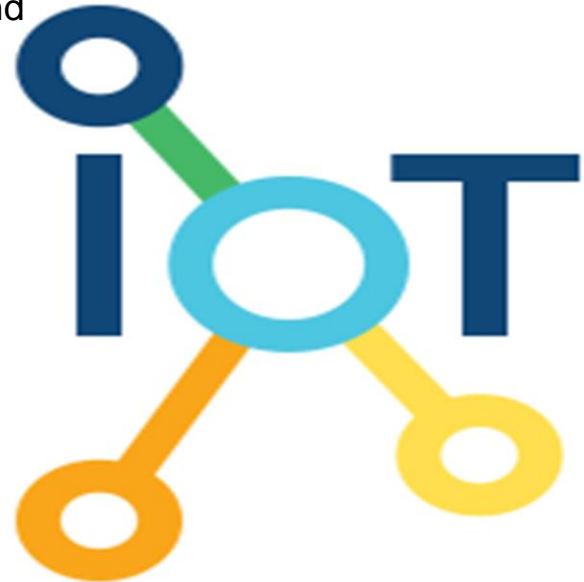
IOT Excellence Center

Industrial companies face pressing challenges that require IIoT solutions. To address a wide range of manufacturing, service, and engineering use cases, PTC has spent years innovating the Technoriya eTechnology IIoT platform.

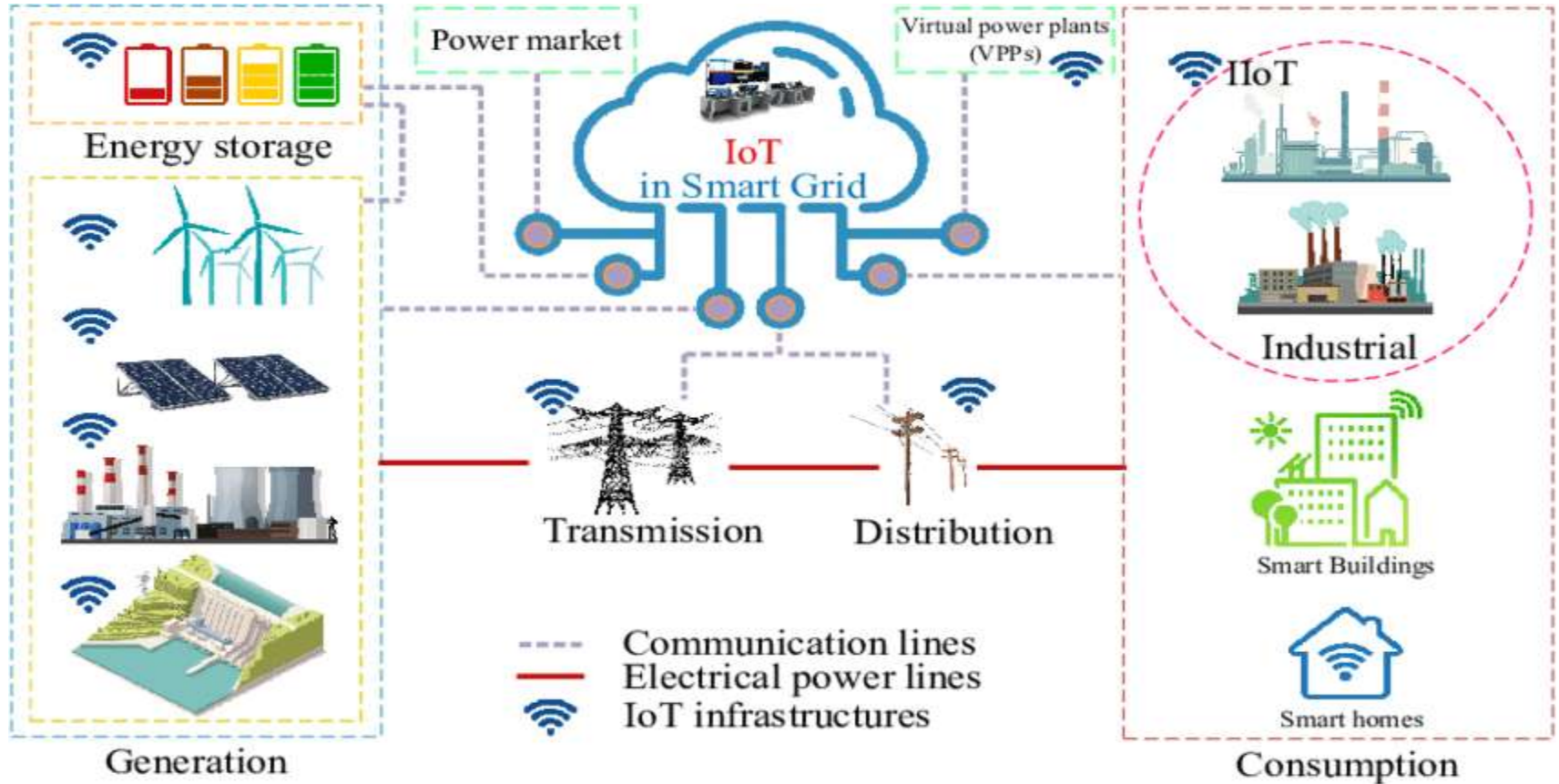
Technoriya eTechnology simultaneously removes the technical barriers to IIoT implementation, while emphasizing practical solutions that quickly return value.

From remote monitoring and service to workforce efficiency and asset optimization, Technoriya eTechnology solves common challenges across different industries.

Because building IIoT solutions is often cited as a pain point, Technoriya eTechnology is designed to reduce these barriers.



IOT GRID



IIOT

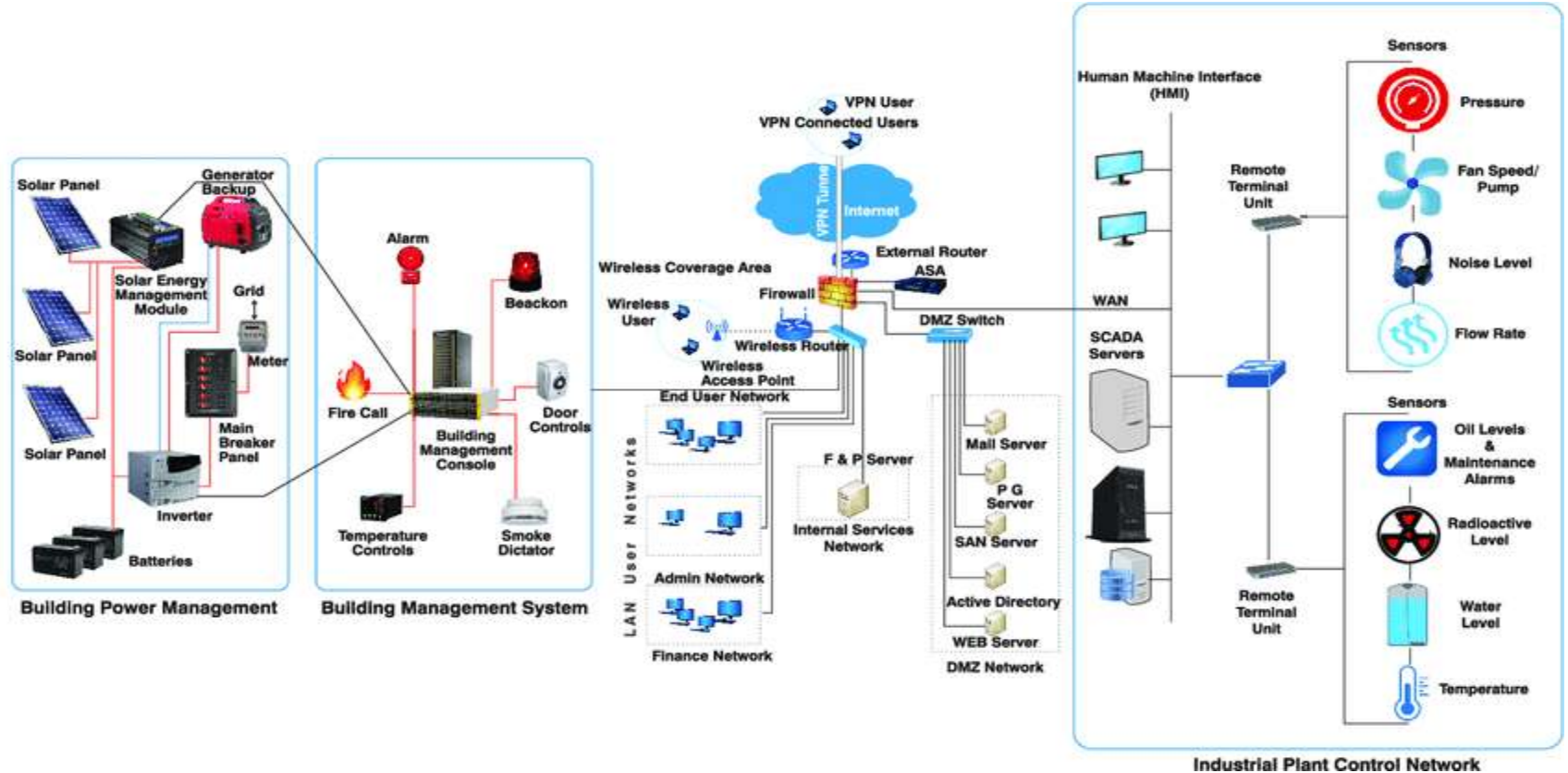
TETPL INDUSTRIAL INTERNET OF THINGS (IIOT) TAKES NETWORKED SENSORS AND INTELLIGENT DEVICES AND PUTS THOSE TECHNOLOGIES TO USE DIRECTLY ON THE MANUFACTURING FLOOR, COLLECTING DATA TO DRIVE ARTIFICIAL INTELLIGENCE AND PREDICTIVE ANALYTICS.

TETPL IIOT, IS DRIVING UNPRECEDENTED DISRUPTION IN AN INDUSTRY THAT HAS STRUGGLED IN RECENT YEARS DUE TO TALENT SHORTAGES, AND THIS OFFERS HOPE FOR THE INDUSTRY'S FUTURE.

WE CAN TRANSFORM TRADITIONAL, LINEAR MANUFACTURING SUPPLY CHAINS INTO DYNAMIC, INTERCONNECTED SYSTEMS—A DIGITAL SUPPLY NETWORK (DSN)—THAT CAN MORE READILY INCORPORATE ECOSYSTEM PARTNERS.



IIOT SOLUTION



IIOT IMPACT

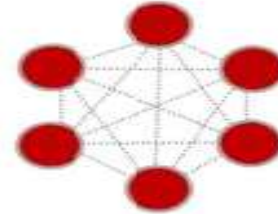
INNOVATION

ENTIRELY NEW
CATEGORIES OF
SERVICES AND
PRODUCTS
BEING DEVELOPED



ECOSYSTEM

NEED TO
ESTABLISH AN
ECOSYSTEM
TO GROW THIS
OPPORTUNITY



33
TRILLION
OPPORTUNITY

Source: McKinsey Global Institute

Numerous organizations have analyzed and anticipated the impact of the Industrial Internet. Every one of these organizations has estimated the impact to be in the trillions of dollars.

AI + IOT

TETPL **IOT+ARTIFICIAL INTELLIGENCE** LEADS TO A BROAD RANGE OF BENEFITS FOR COMPANIES AND CONSUMERS LIKE A PROACTIVE INTERVENTION, PERSONALIZED EXPERIENCE, AND INTELLIGENT AUTOMATION.

AI IN IOT CRUNCHES THE CONSTANT STREAMS OF DATA AND DETECTS THE PATTERNS NOT DECEPTIVE ON SIMPLE GAUGES. IN ADDITION, MACHINE LEARNING COUPLED WITH AI CAN PREDICT THE OPERATION CONDITIONS AND DETECT THE PARAMETERS TO BE MODIFIED TO ENSURE IDEAL OUTCOMES.

BENEFITS OF COMBINING THESE TWO DISRUPTIVE TECHNOLOGIES TO THE BUSINESSES:

BOOSTING OPERATIONAL EFFICIENCY

BETTER RISKS MANAGEMENT

TRIGGERING NEW AND ENHANCED PRODUCTS & SERVICES

INCREASE IOT SCALABILITY

ELIMINATES COSTLY UNPLANNED DOWNTIME



APPLICATION

TETPL APPLICATIONS OF AI IN IOT:

- ✓ COLLABORATIVE ROBOTS
- ✓ DRONES
- ✓ SMART CITIES
- ✓ DIGITAL TWINS – *TWIN OBJECTS IN WHICH ONE IS A REAL-WORLD OBJECT AND THE OTHER IS ITS DIGITAL REPLICA*
- ✓ SMART RETAILING



Create
Sensors



Communicate
Networks



Aggregate
Integrations



Analyze
Augmented
Intelligence



Act
Augmented
Behaviour



OUR SERVICES

WHAT WE EXCEL AT !!

Corporate Training (SAP & ERP)

We have a huge pool of immensely talented & experienced consultants who are having hands on experience on many IOT, ERP implementations across a wide range of industry verticals. Our strength lies in delivering quick and high-quality services on latest technologies.

We have certified trainers, who have been working in top CMMI Level Companies, and to name a few are: Accenture

- ❖ Tech Mahindra
- ❖ TCS
- ❖ CMC
- ❖ Cap Gemini etc.

We also provide 100% real scenarios in all the courses. With our real time trainer's expertise and tailor-made training curriculum you can meet your career objectives whether you are a student, fresher or a working professional.

With such a broad client base, Technoriya Solution guarantees that talented and experienced candidates will be exposed to meaningful career opportunities.



RF ANALYSIS SOFTWARE

TETPL OFFERS END-TO-END, HIGH-PERFORMANCE RADIO FREQUENCY (RF) SIMULATIONS OF WIRELESS DEVICES AND SYSTEMS FOR AEROSPACE, AUTOMOTIVE, COMMUNICATIONS, CONSUMER ELECTRONICS, INTERNET OF THINGS (IOT) AND OTHER APPLICATIONS.

TETPL SYSTEM, PROVIDES A GENERAL-PURPOSE LIBRARY OF WIRELESS RF SYSTEMS AND PROPAGATION MODELS, ALONG WITH DIAGNOSTIC TOOLS NEEDED TO QUICKLY IDENTIFY AND MITIGATE ROOT CAUSES OF RADIO FREQUENCY INTERFERENCE (RFI), WHICH IMPACT THE PERFORMANCE OF WIRELESS SYSTEMS.

KEY FEATURES:

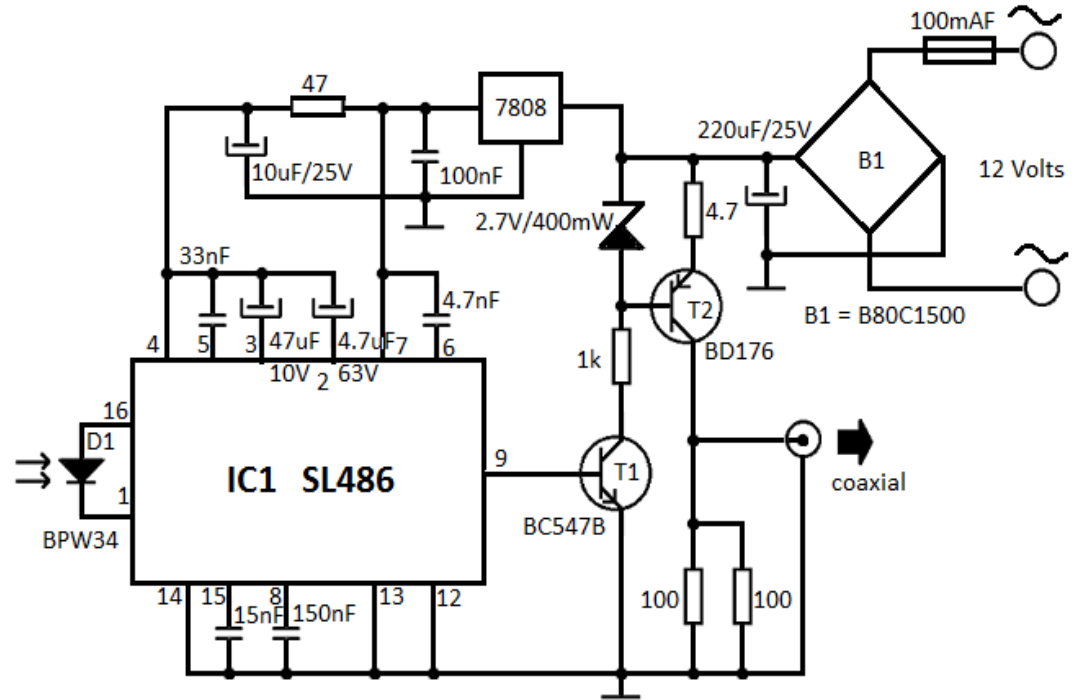
- RF LINK BUDGET ANALYSIS.
- BUILT-IN RF RADIO AND COMPONENT LIBRARIES.
- MULTIFIDELITY BEHAVIORAL RADIO MODELS.
- BUILT-IN WIRELESS PROPAGATION MODELS.
- RF COSITE AND ANTENNA COEXISTENCE ANALYSIS.
- AUTOMATED DIAGNOSTICS FOR RAPID ROOT-CAUSE ANALYSIS.



RF REPEATERS

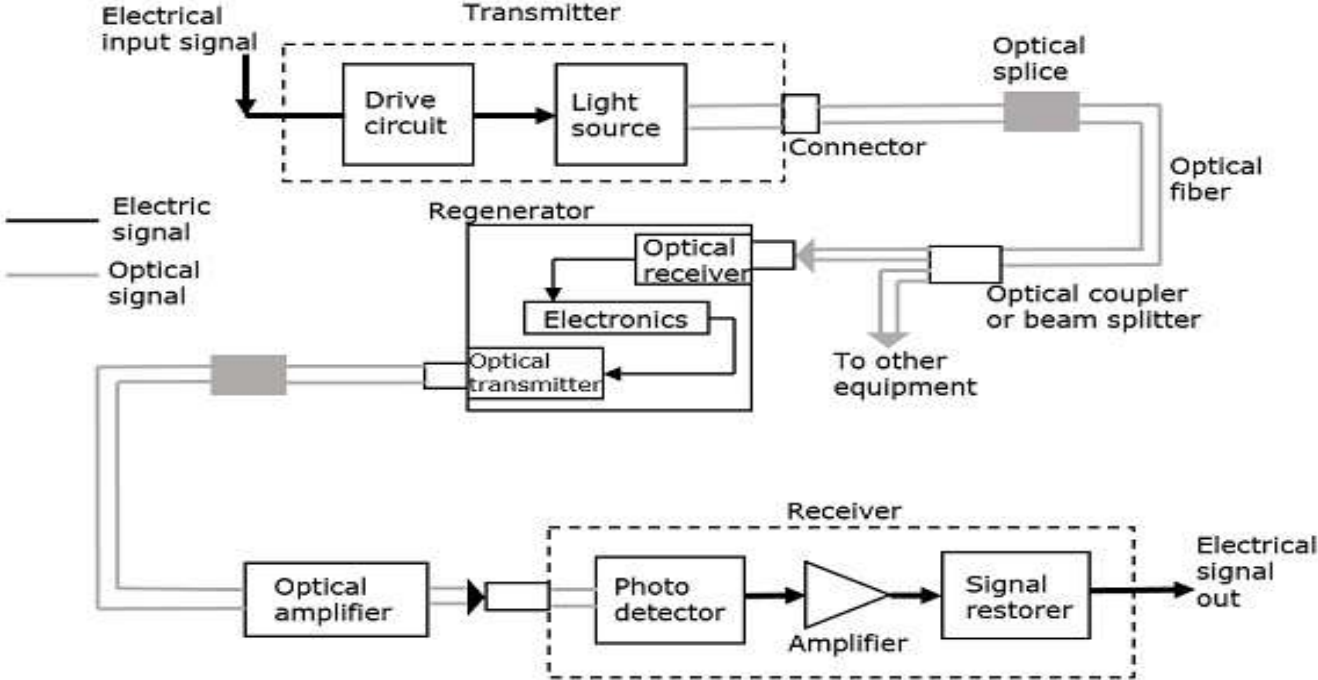
RF SIGNAL REPEATERS USE A THREE-PART SYSTEM TO CAPTURE WEAK SIGNAL, AND THEN AMPLIFY, OR REPEAT THAT SIGNAL TO STRENGTHEN IT. THEN THE SIGNAL IS BROADCASTED TO THE AREAS IN A BUILDING OR COMMERCIAL SPACE WHERE SIGNAL IS WEAK.

RF REPEATERS ARE USED IN MANY DIFFERENT INDUSTRIES LIKE GOVERNMENT BUILDINGS, SCHOOLS, STORES, AND OFFICES TO IMPROVE IN-BUILDING CELL SIGNAL.



Infrared Repeater's Receiver Circuit

OPTICAL REPEATERS

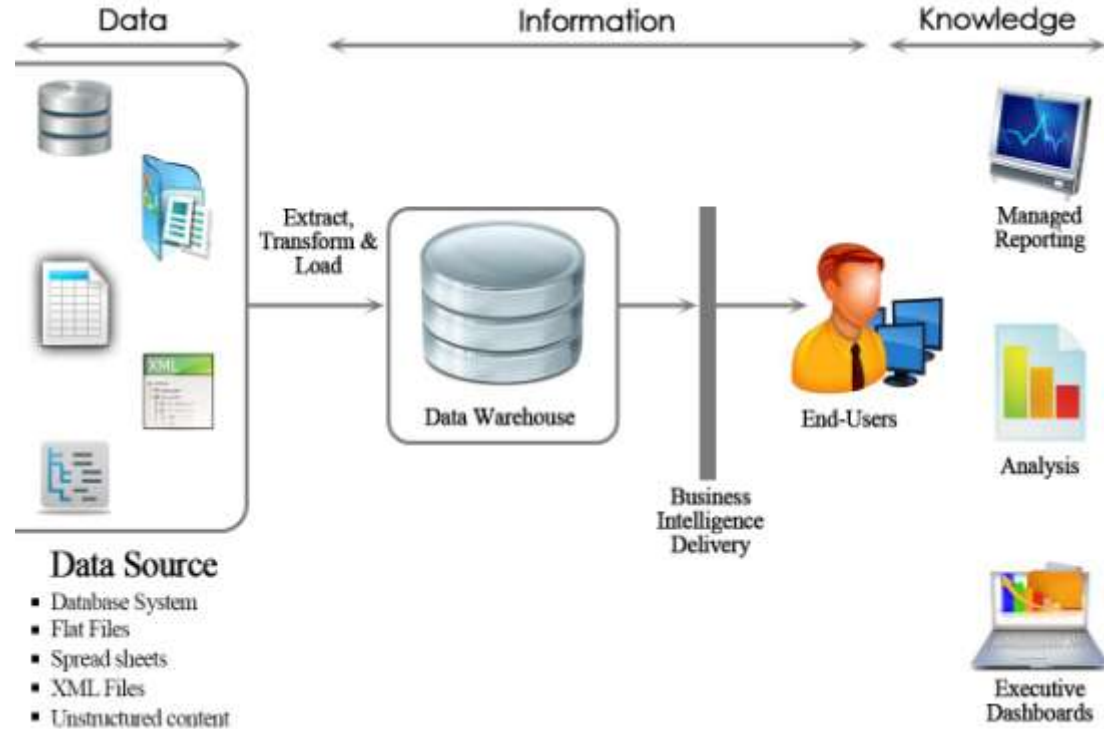


SAP BI

TETPL OFFERS SAP BI TO PROVIDE ORGANIZATION WITH A FLEXIBLE ROUTE TO SHARING INFORMATION THAT AVAILABLES FOR THE ENTIRE ORGANISATION.

KEY FEATURES:

INFORMATION AT FINGERTIPS
FASTER AND MODULAR
SCALABLE
DATA RELIABLE
UNIFIED INFORMATION
FLEXIBLE INTEGRATION
DATA DISTRIBUTION
ONLINE/OFFLINE



SAP FIORI

TETPL OFFERS SAP FIORI THE DESIGN LANGUAGE THAT BRINGS GREAT USER EXPERIENCES TO ENTERPRISE APPLICATIONS. BASED ON USER ROLES AND BUSINESS PROCESSES, SAP FIORI SIMPLIFIES DOING BUSINESS.

SAP FIORI ELEMENTS (FORMERLY KNOWN AS SMART TEMPLATES) PROVIDE A FRAMEWORK FOR THE MOST COMMON APPLICATION PATTERNS.

THE APPLICATION TEAM SELECTS THE RELEVANT FLOORPLAN AND ADDS SEMANTIC AND STRUCTURAL DATA USING METADATA ANNOTATIONS. THE FRAMEWORK THEN GENERATES THE APPLICATION SCREEN.

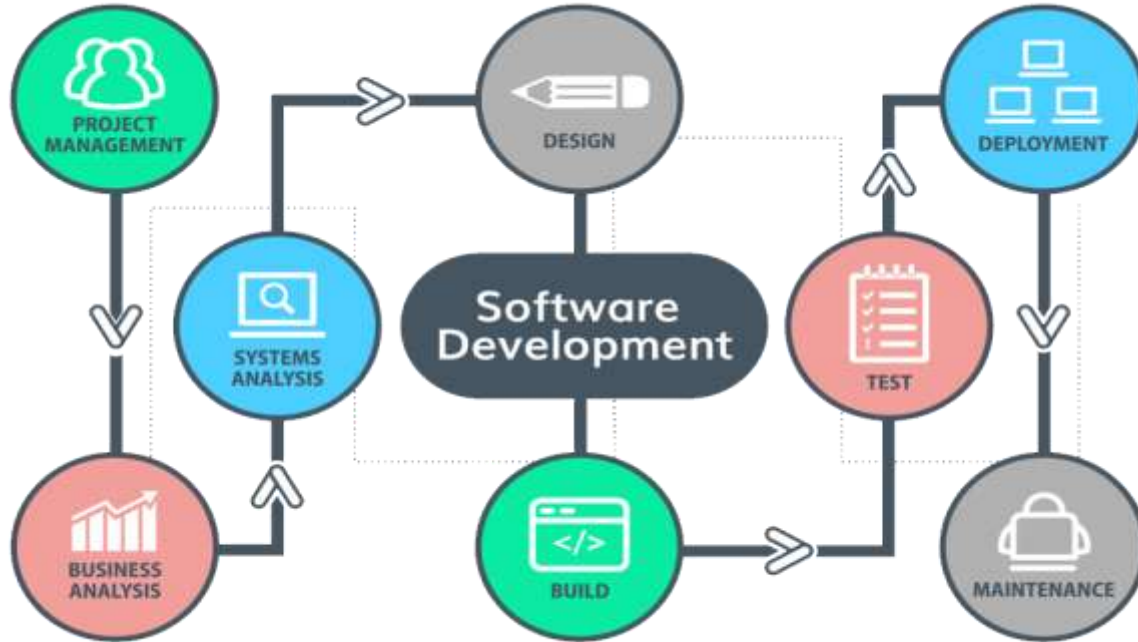
SAP FIORI ELEMENTS ENSURE DESIGN CONSISTENCY AND COMPLIANCE WITH THE LATEST DESIGN GUIDELINES, WHILE REDUCING THE AMOUNT OF FRONTEND CODE NEEDED TO BUILD SAP FIORI APPS.



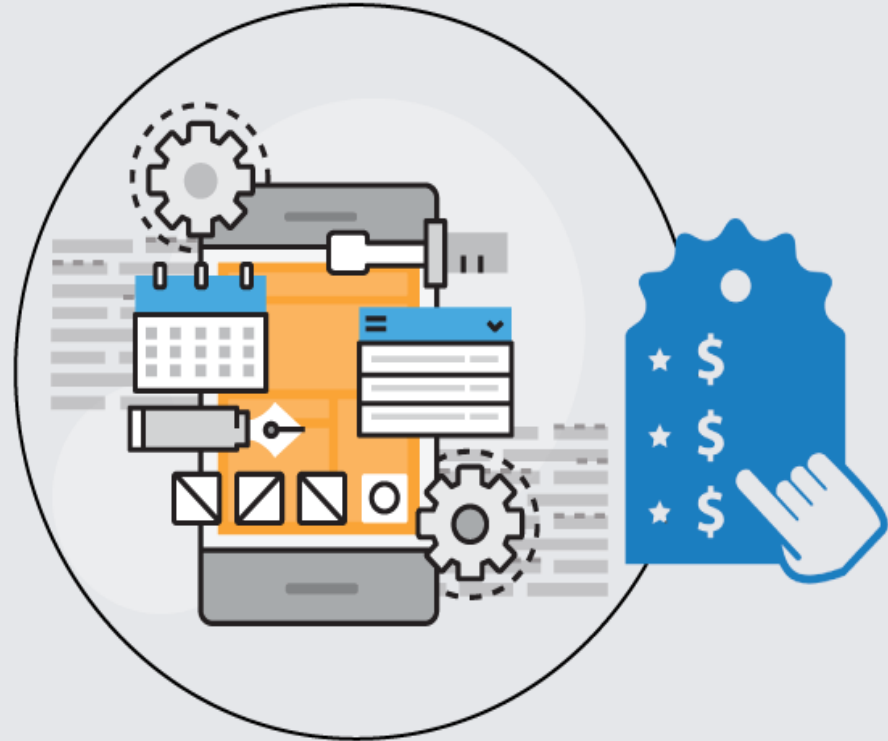
WEB APP



SOFTWARE DEVELOPMENT



ANDROID APP



IOS APP





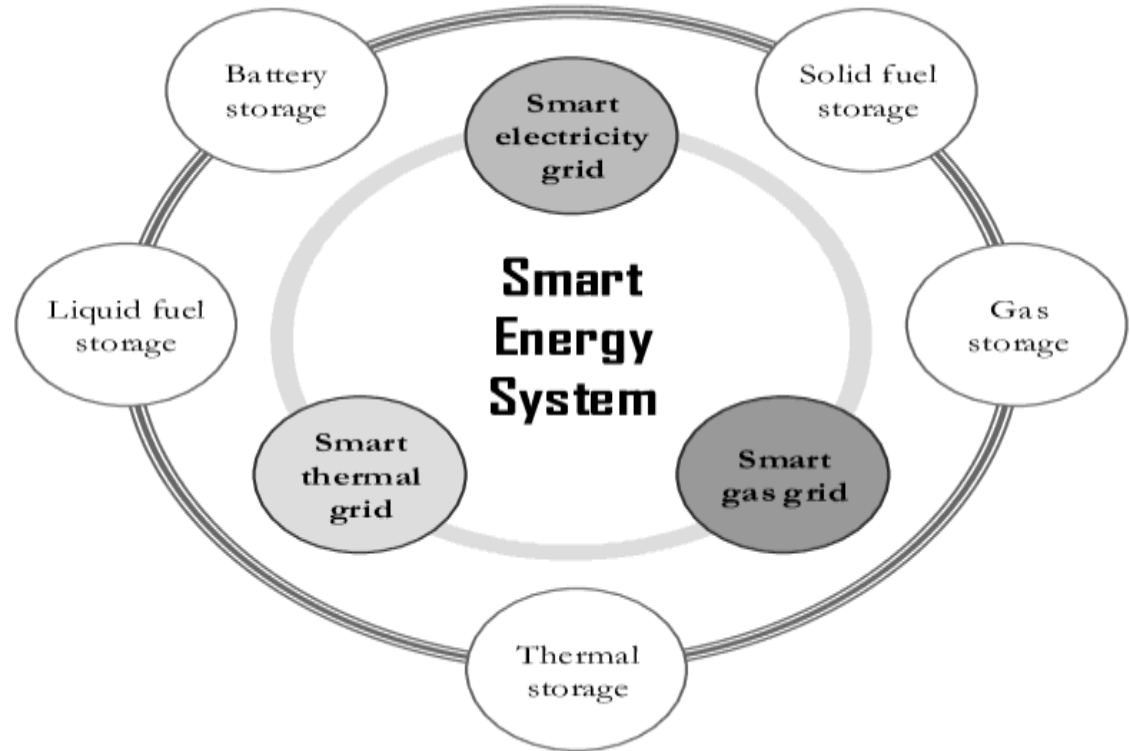
OUR CONSULTING

WE SPECIALIZE IN ADVISING
ALSO !!

SMART ENERGY

TETPL SMART ENERGY SYSTEM FEATURES INVOLVES:

- ✓ SMART ENERGY FOR HOME
- ✓ SMART ENERGY FOR BUSINESS
- ✓ RENEWABLE ENERGY
- ✓ ENVIRONMENT BENEFITS



E-CONSULTING





OUR PROJECTS

WE DELIVER ALSO !!

PROJECTS

LTE RF PLANNING



MAHINDRA OPTICAL PROJECTS



INDIA BULLS



PROJECTS

POLLUTION CONTROL
SYSTEM AUTOMATION

E-OFFICE AUTOMATION

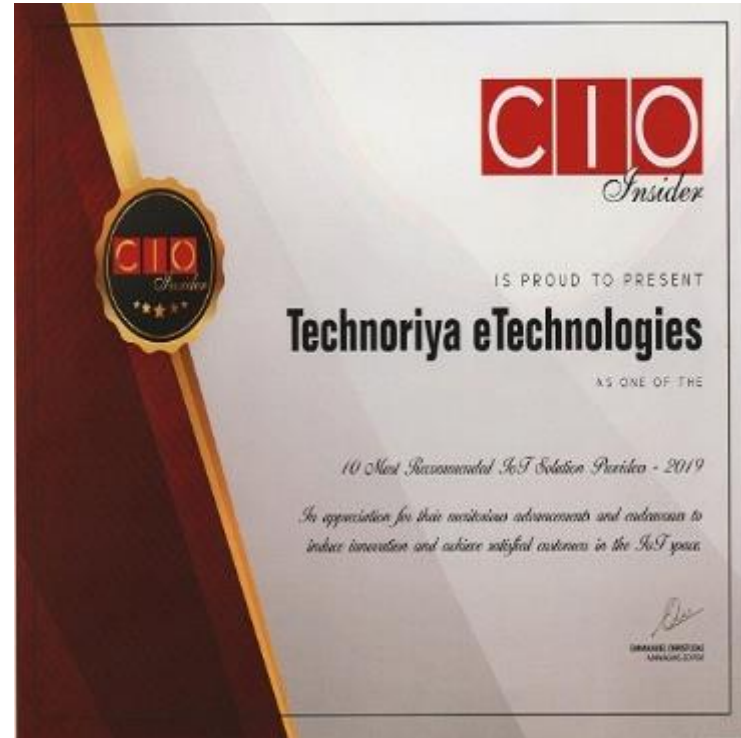
IOT NETWORK LoRA/NbIoT
INTEGRATION

IOT /MICROCONTROLLER
BASED CONTROL PANEL

EV DESIGN CONSULTING

5G CONSULTING

Technoriya eTechnologies Certificates

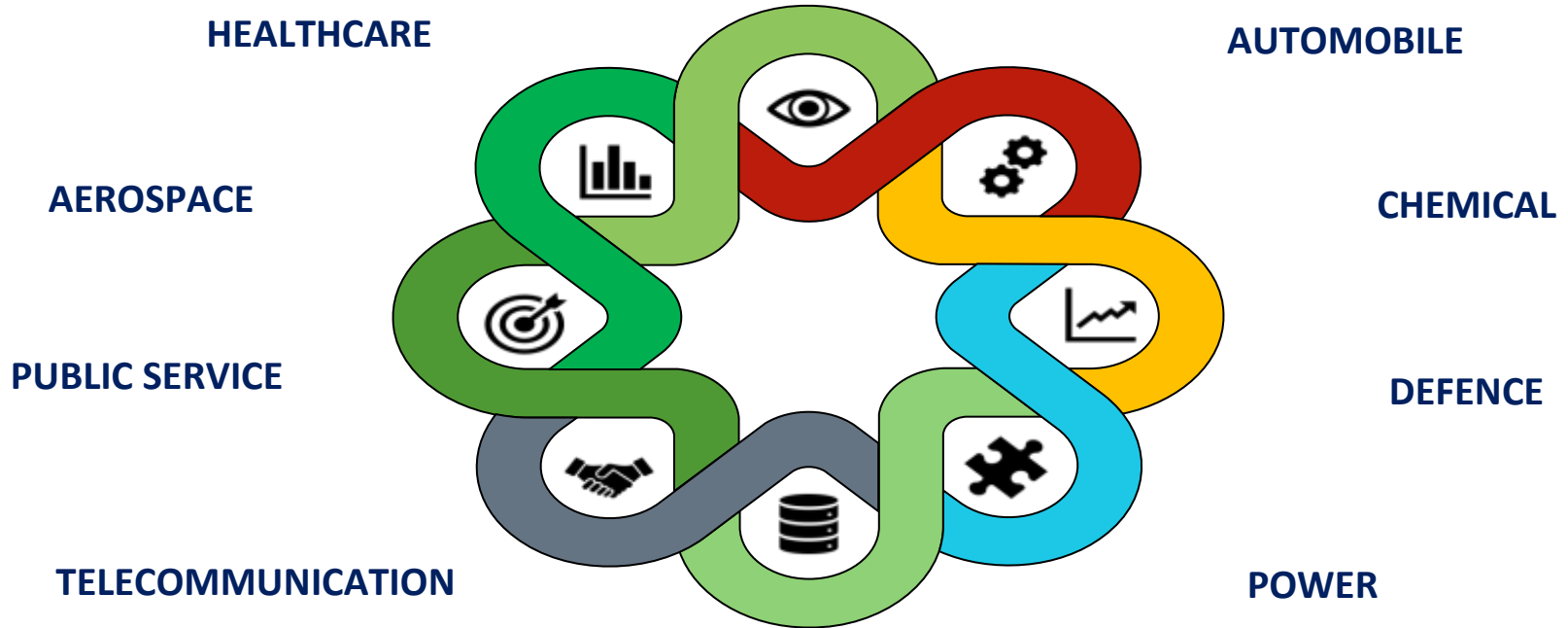




OUR SECTORS

WE CATER !!

SECTORS



ADVISORY BOARD

DR. LAXMIDHAR BEHERA

PROFESSOR, IIT KANPUR

18+ YEARS OF EXPERIENCE IN ARTIFICIAL INTELLIGENCE, BRAIN-COMPUTER INTERFACE, SIGNAL PROCESSING, ADVANCED ROBOTIC SYSTEMS

DR. RANJAN BEHERA

ASSOCIATE PROFESSOR, IIT PATNA

8+ YEARS OF EXPERIENCE IN IOT, ML AND SMART GRID



DR. G ANANDHI

PHD – COMPUTER SCIENCE

20+ YEARS OF EXPERIENCE IN CONSULTING

DR. S A BHOSLE

PHD – SOLID STATE ELECTRONICS

40+ YEARS OF EXPERIENCE IN INDUSTRY & TEACHING.

SAP CONSULTANT

THANKS!

You can find us at:

- www.technoriya.com
- info@technoriya.com
- 022-27561822/ 8082060006
- SKYPE : technoriya.etechnologies
- **TECHNORIYA ETECHNOLOGY PRIVATE LIMITED**

A-209, Shiv Chamber, Plot No. 21, Sector-11, CBD Belapur, Navi Mumbai

